

# BROMEACT

## Anti-Inflammatory FORMULA

*Bromelain | Boswellia | Cumarin*



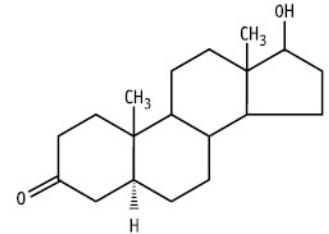
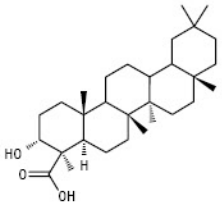
*Dietary Supplement*



**30** capsules of 350 mg (10,5g)

# Anti-inflammatory effect

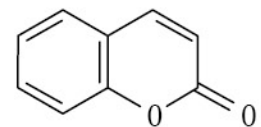
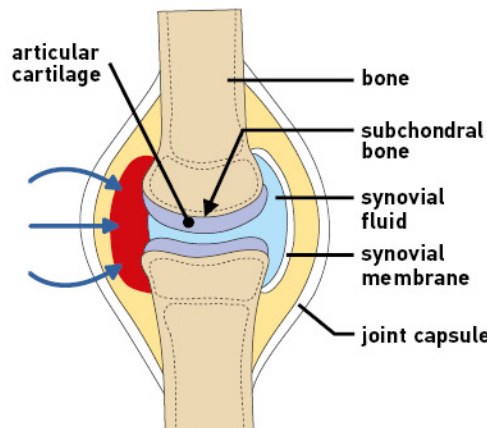
- **Bromelain**
  - Increases the production of prostaglandins with anti-inflammatory effect.
  - Inhibits the transformation of kininogen into kinin.
  - Stimulates PGE 1: It selectively inhibits platelet aggregation and therefore blood (coagulation) clotting.
- **Boswellic Acid:**
  - Selectively inhibits 5-lipoxygenase, by blocking:
    - 1) **Leukotriene B4 synthesis:** Receptor of chronic inflammation phase.
    - 2) **Leukotriene C4, D4, E4 synthesis:** Receptors of acute inflammation phase.
  - Does not inhibit gastroprotective prostaglandins synthesis.
  - Inhibits the shift of polymorphonuclear leukocytes and the release of proteolytic enzymes



# Decongestant Activity

- **Bromelain:**
  - Develops a fibrinolytic activity in interaction with lipoxygenase through plasminogen, that increases the production of plasmin, which degrades fibrin clots (fibrinolysis) preventing the development of local swelling.
- **Coumarin:**
  - Effects on the lymphatic system thanks to its ability to increase macrophage proteolytic activity.
  - It decreases the catabolism of catecholamine (adrenalin) on a vascular level and therefore contributes to the ability of the capillaries/vessels to contract and reduce swelling and pain.

# BROMEACT



COMPOSITION IN ACTIVE INGREDIENTS	Per daily dose (1 capsule)
Bromelain 2500 GDU from stem <i>Ananas comosus</i>	100 mg
Boswellia serrata dry extract	100 mg
From which boswellian acids	65 mg
Melitoto officinalis dry extract	50 mg
Coumarin	10 mg

- IT IS RECOMMENDED IN CASES
  - of chronic inflammation and pain in distressed joints.
- DOSAGE
  - Take 1 capsule daily.

**PRECAUTIONS** • The product should not be taken in the following cases: (1) Hypersensitivity to bromelain or to boswellia (2) If you are allergic to pineapple, celery, carrot or you are allergic to grass pollen. • Do not exceed the recommended daily dose. • Dietary supplements should not be used as a substitute of a balanced diet. • Keep away from young children. • This product is not intended for the prevention, cure or treatment of a human disease. • Consult with your doctor if you are pregnant, breast-feeding, taking pharmaceutical treatment or having health problems.

Notification number of the EMEA: 26343 / 8-4-2013 / Medicines Agency (EMA) does not serve as a distribution permit from the European Medicines Agency (EMA)