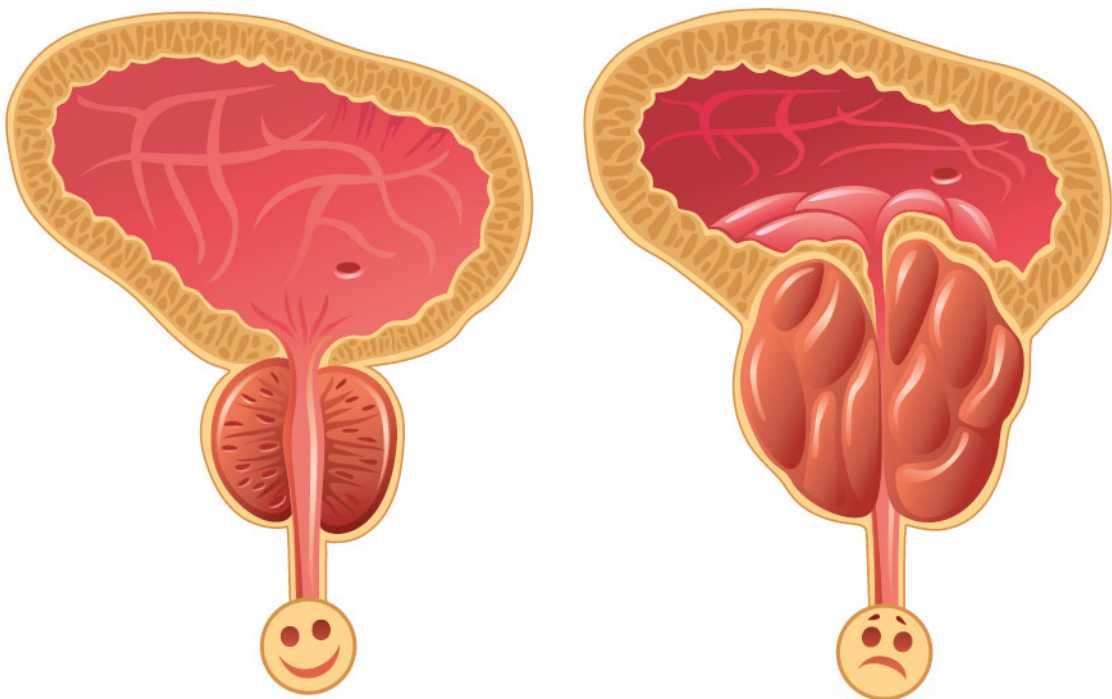


# PROSTAPLUS

## FORMULA for a Healthy Prostate

*it improves the function of prostate  
a tablet on a daily basis with multiple effects*

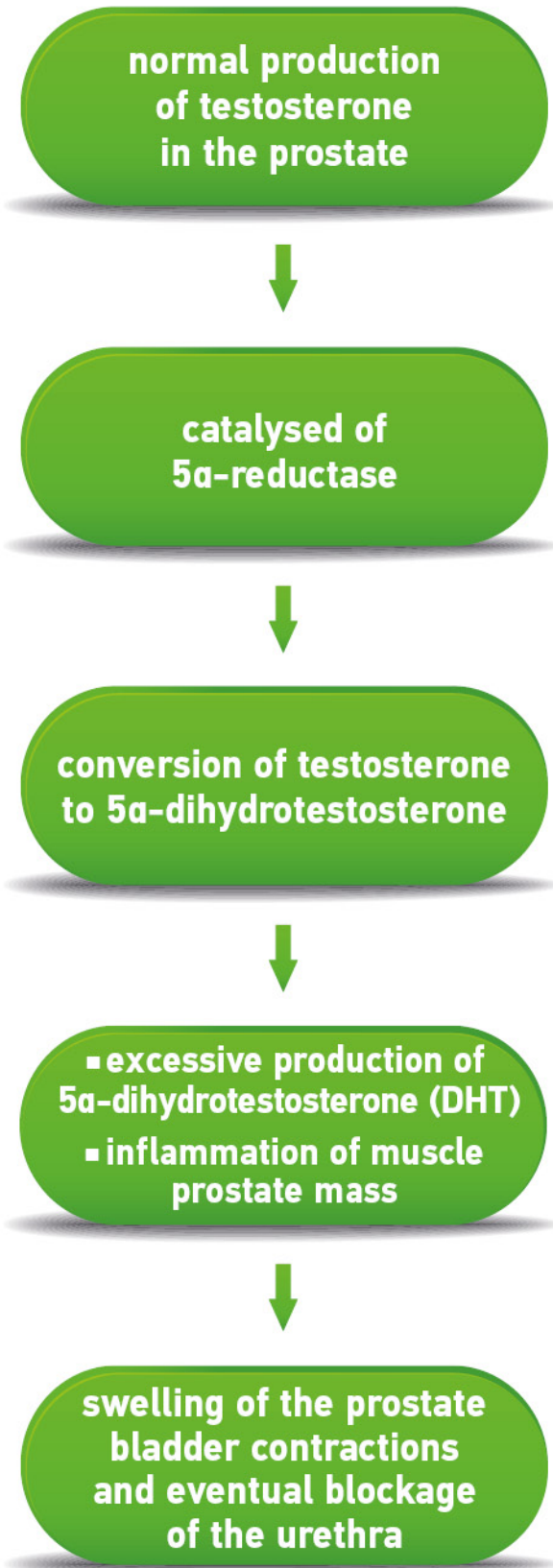


*Dietary Supplement*

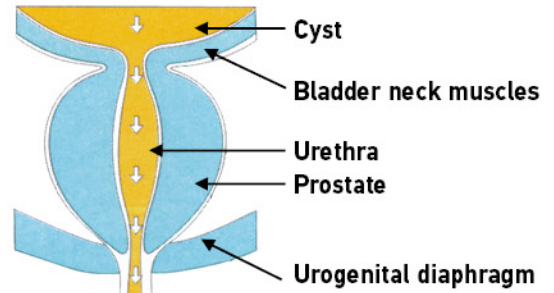
**30** tablets



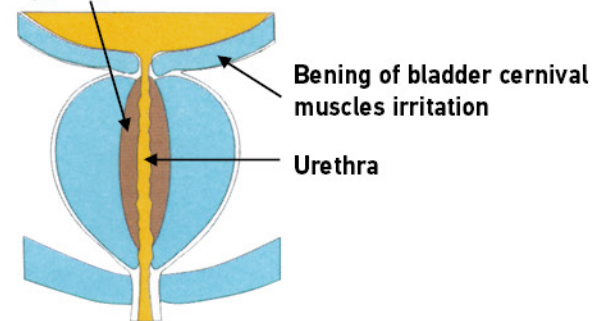
# Pathology...



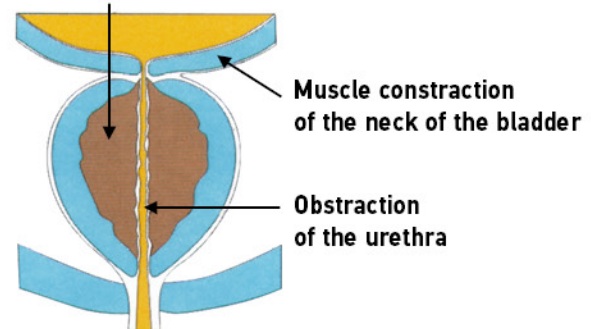
Prostate under normal conditions



How benign prostatic hyperplasia starts



Benign prostatic hyperplasia



BENIGN PROSTATIC HYPERPLASIA

## SYMPTOMS

- Difficulty in urinating
- Urgent need to urinate
- Frequent Urination
- Nocturia

## THE ADVANTAGES

- One dose
- It combines the effect of active components

## RECOMMENDED IN CASES OF

- Difficulty in urinating
- Urgent need to urinate
- Frequent Urination
- Nocturia

## DOSAGE

- Take 1 tablet a day after meal.

COMPOSITION IN ACTIVE INGREDIENTS	Per daily dose (1 tablet)	% RDA
Serenoa repens (sabal) dry extract 40% to fatty acid	200 mg	
Cucurbita pepo (pumpkin seeds) dry extract E/D:1/4	200 mg	
b-Sitosterole	100 mg	
Melissa officinalis dry extract 2% to Rosmarinic acid	100 mg	
Zinc sulphate	41 mg	410%
Ascorbic acid (Vit. C)	30 mg	37,5%
Tocopherol acetate (Vit. E)	67 mg	558,3%
Retinol palmitate (Vit.A)	2 mg	250%

**PRECAUTIONS** • Do not take the product in the following cases: Hypersensitivity to any of the ingredients. • Do not exceed the recommended daily dose. • Dietary supplements should not be used as a substitute of a balanced diet. • Keep away from young children. • This product is not intended for the prevention, cure or treatment of a human disease. • Consult with your doctor if you are pregnant, breast-feeding, taking pharmaceutical treatment or having health problems.

**Notification number of the EMEA:** 28339 / 8-4-2013 / Medicines Agency (EMEA) does not serve as a distribution permit from the European Medicines Agency (EMEA)